

Saying 'Enough' to Inequitable County Reimbursement

Amanda Hegge, Director of the Whitehall Public Library

Jessica Schoonover, Director of the Shirley M. Wright Memorial Library



“I’ll have that \$10 sandwich for \$7 .”



Timeline for County Funding

A look into the last 4 years and our journey to 100% reimbursement

70%

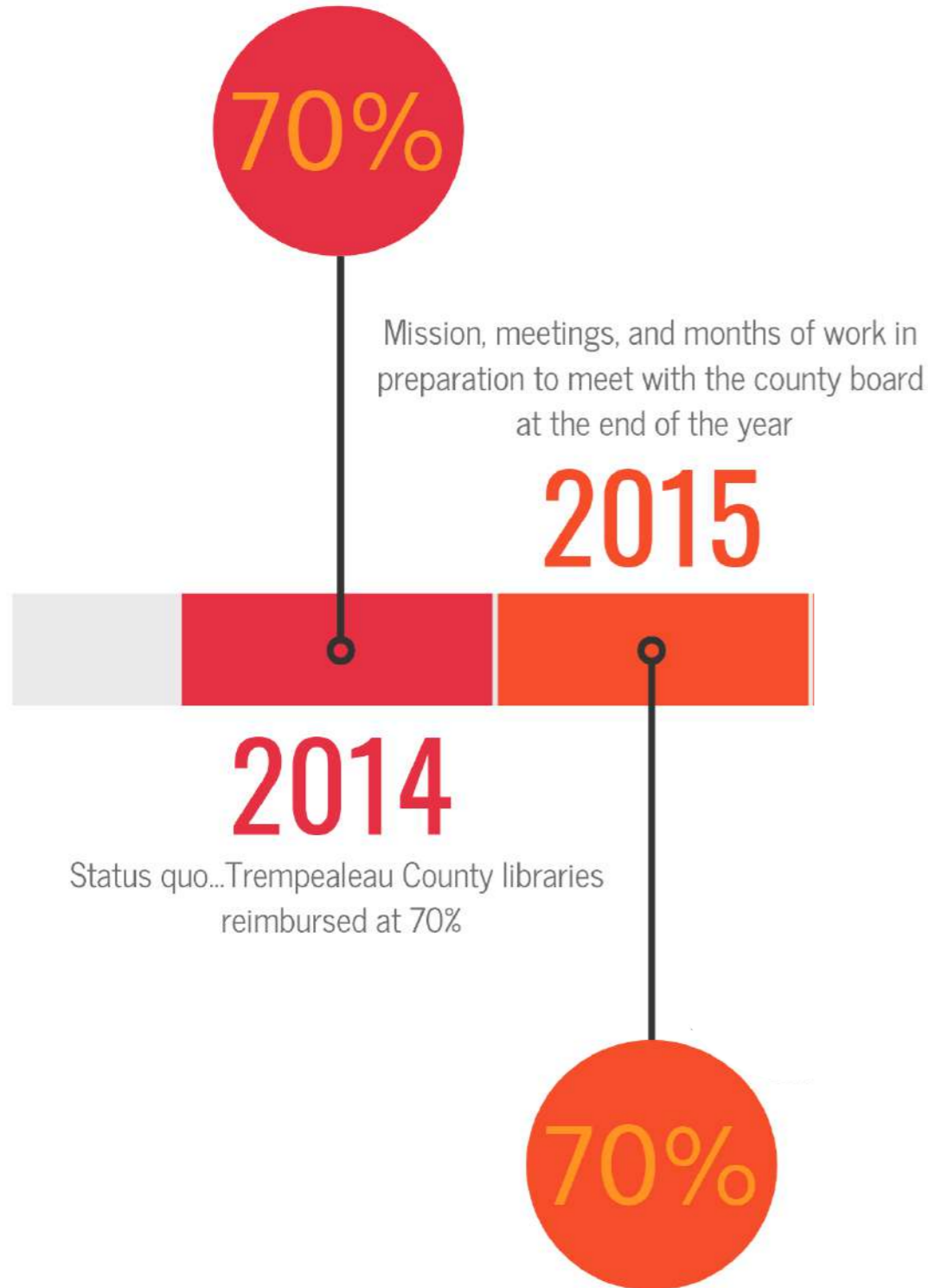


2014

Status quo...Trempealeau County libraries
reimbursed at 70%

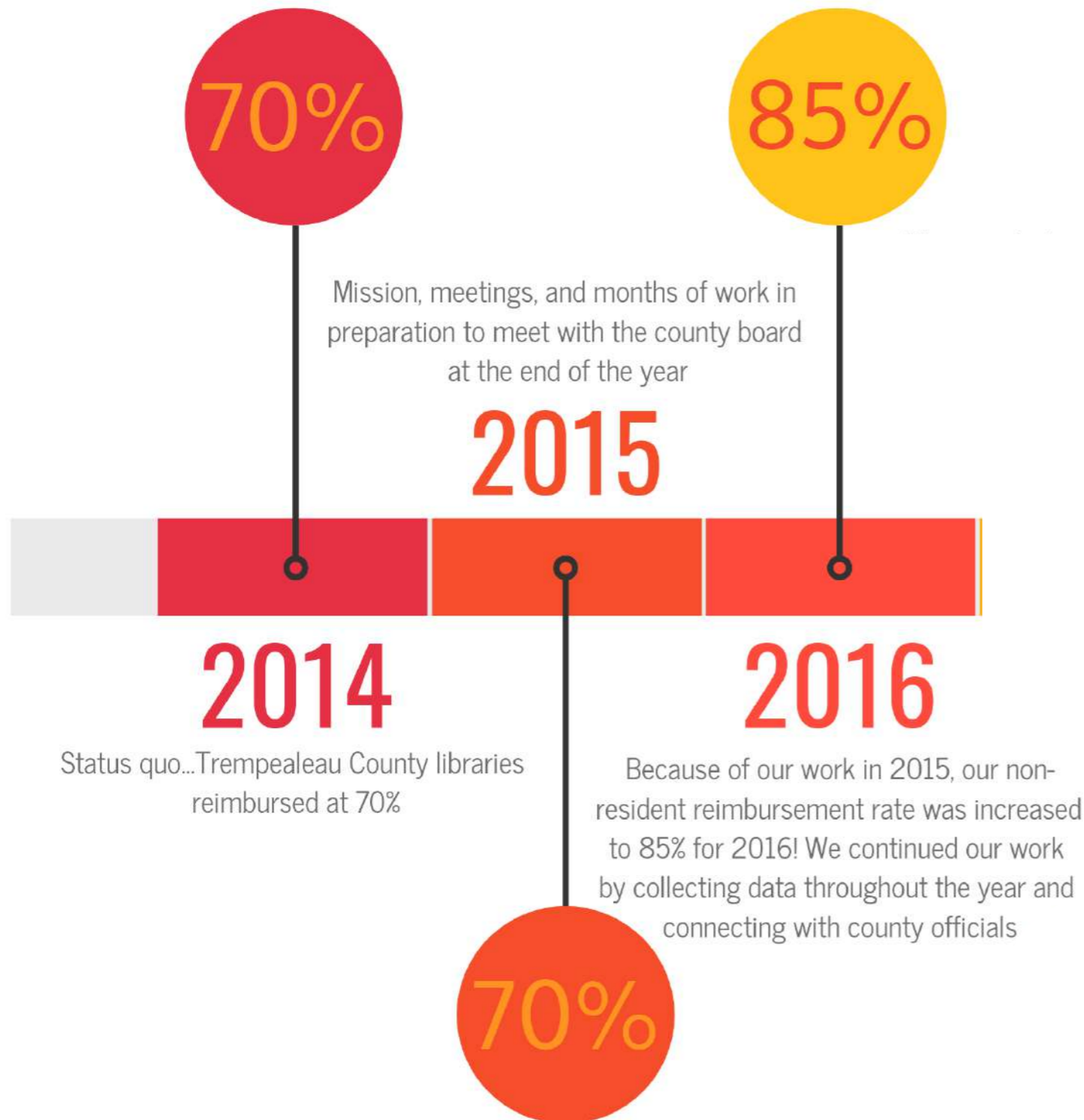
Timeline for County Funding

A look into the last 4 years and our journey to 100% reimbursement



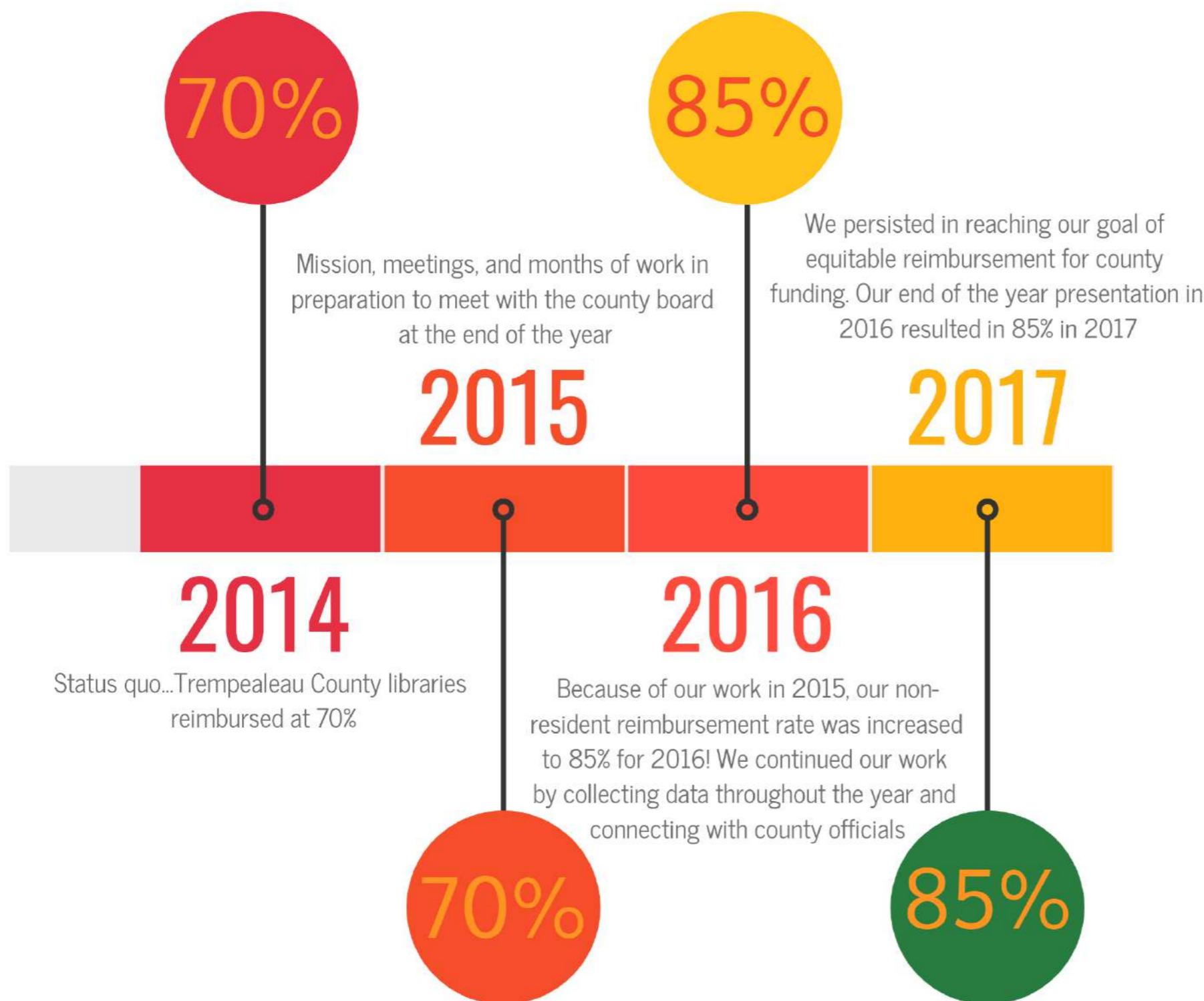
Timeline for County Funding

A look into the last 4 years and our journey to 100% reimbursement



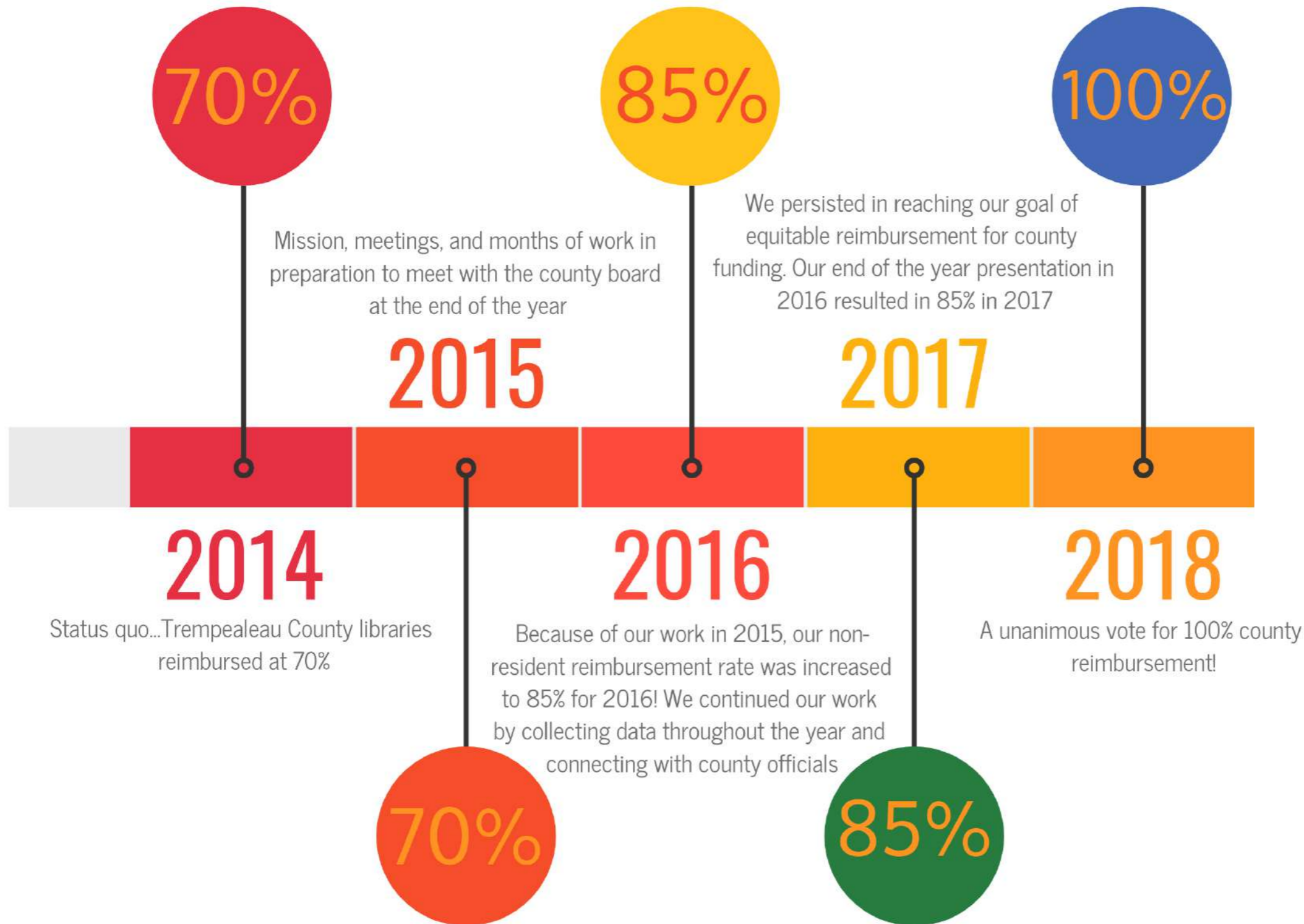
Timeline for County Funding

A look into the last 4 years and our journey to 100% reimbursement



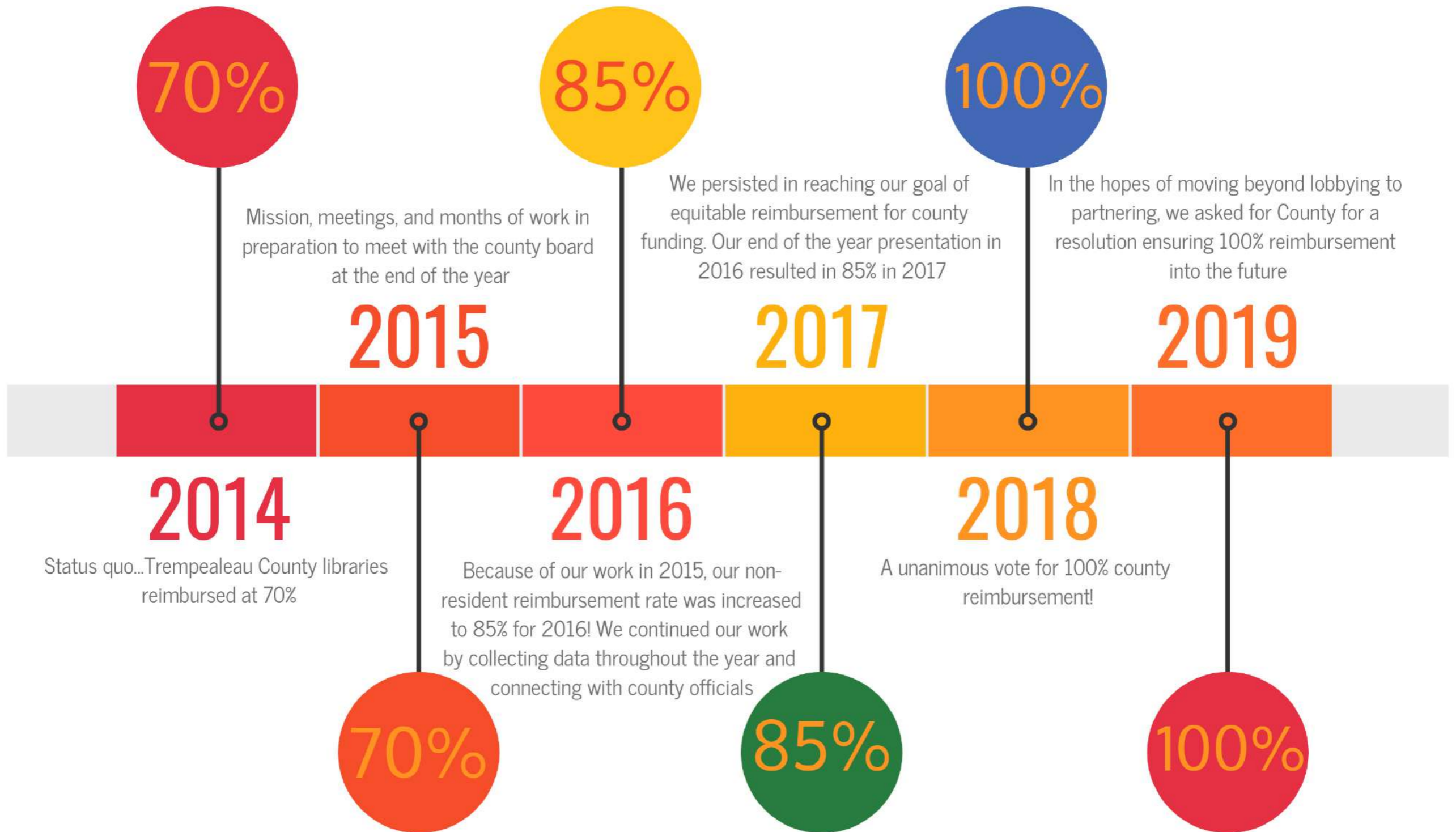
Timeline for County Funding

A look into the last 4 years and our journey to 100% reimbursement



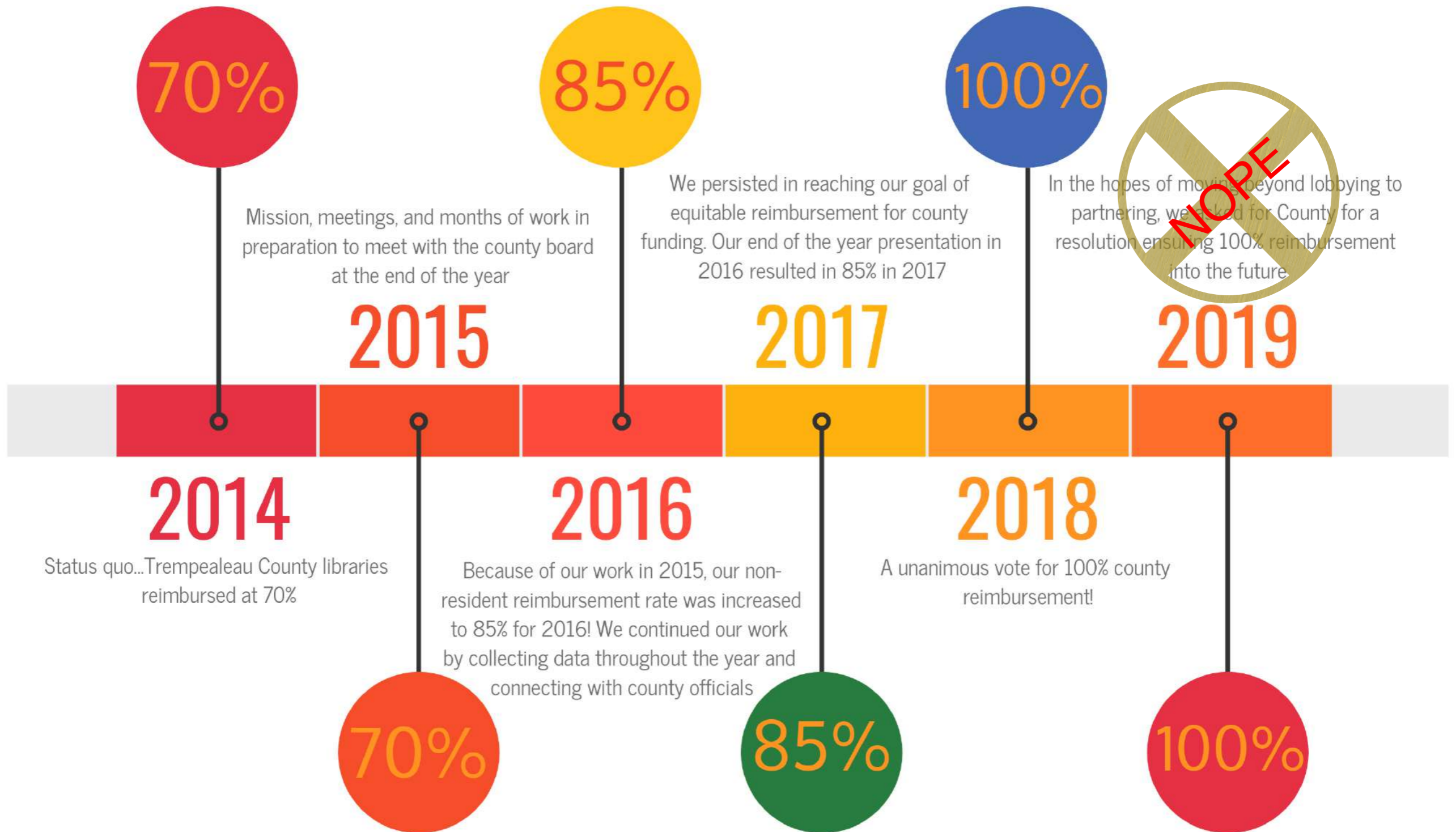
Timeline for County Funding

A look into the last 4 years and our journey to 100% reimbursement



Timeline for County Funding

A look into the last 4 years and our journey to 100% reimbursement



What Worked for Us

- ◆ Form your Team
- ◆ Do your Homework
- ◆ Create a Feast for their Eyes
- ◆ The Presentation(s)
- ◆ WARNINGS
- ◆ Be Unforgettable

Define the Problem

- ◆ We're not being fully reimbursed for the services we provide to library patrons! We wanted 100% reimbursement.
- ◆ What do we need to know to solve it?



Form the Team

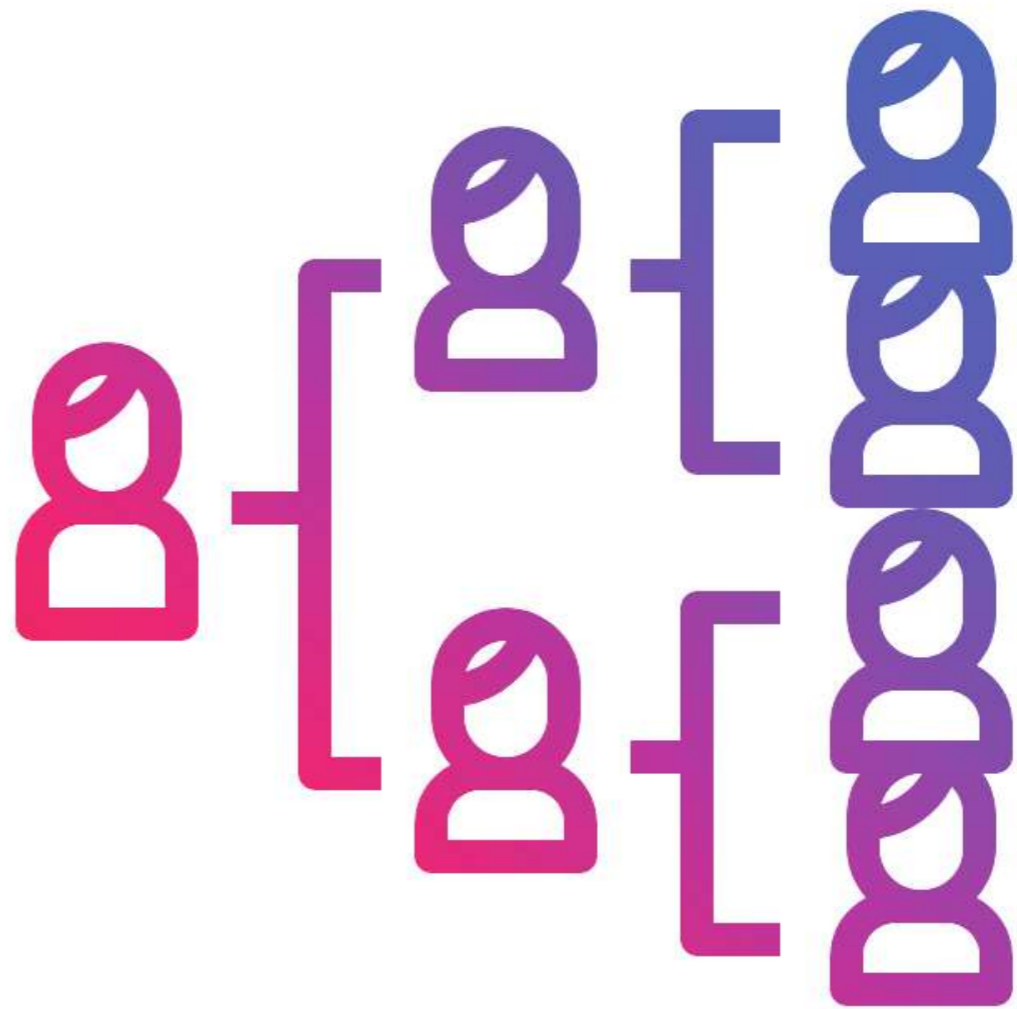
- Library directors in your county
- Someone needs to lead and that person will need support
- Some people will do more work than others
- Let your System Director know what you're doing
- Be prepared to hear a resounding 'NO'!



Do Your Homework

The People:

- ◆ Find out who is in charge of your county: Clerk? Administrator? Executive?
- ◆ Know your county board, and county board chair.
- ◆ Do you know any of the county board members or know someone who knows the County Board members?

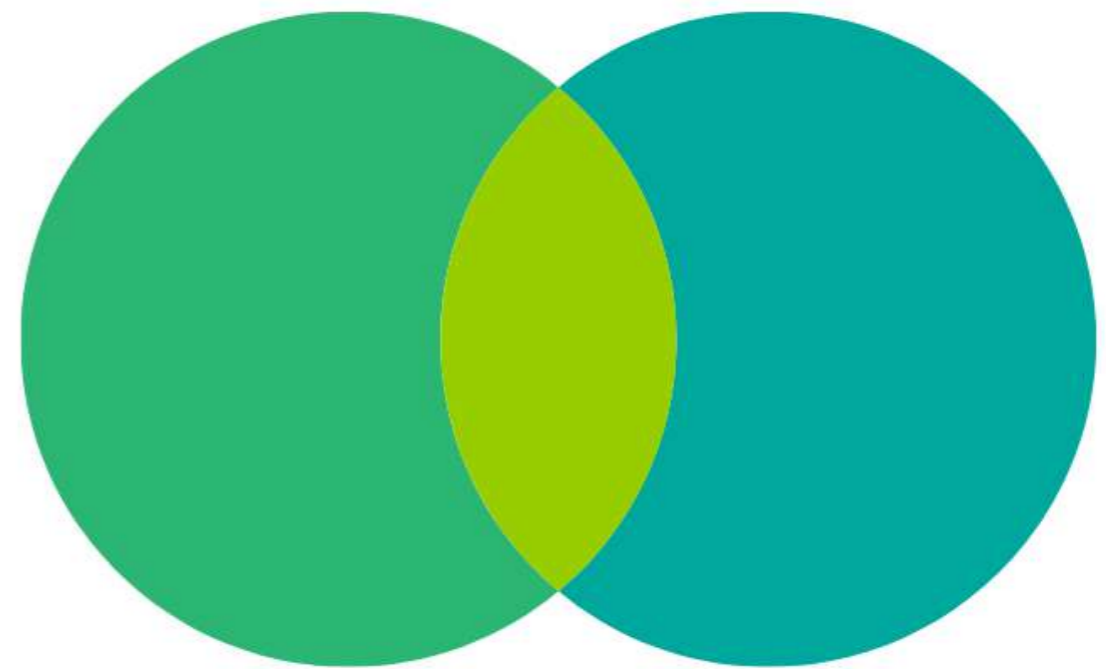


Do More Homework

- ◆ How does the budgeting process in your county work?
- ◆ Do you know any of the County Board members or know someone who knows the County Board members? Start talking!
- ◆ Most will meet toward the end of the year, September, October, November?

Common ground?

- Does your county have a strategic plan?
- Are their initiatives in your county like literacy, domestic abuse, alcohol and other drugs, immigration?
- All governments are interested in workforce development?



Vocabulary Lesson

- ◆ **Levy limit:** the amount of money a county is able to tax it's residents
- ◆ **Mill rate:** the amount of tax payable per dollar of assessed value of a property
- ◆ **Per capita:** for each person
- ◆ **Non-Resident:** Someone who uses your library, but does not live in the same municipality in which the library is located.
- ◆ **Reimbursement:** a sum paid to cover money that has been spent or lost

More Vocab.

- ◆ **In-County:** refers to libraries within the county that you are seeking reimbursement for
- ◆ **Adjacent County:** These are the counties next to you that must be reimbursed by your county
- ◆ **System Request:** The amount of money your library system is requesting from your county

VERY IMPORTANT INFORMATION

(e) The limit otherwise applicable under this section does apply to any of the following:

1. The amount that a county levies in that year for a county children with disabilities education board.
2. The amount that a 1st class city levies in that year for school purpose. !!!!!
3. The amount that a county levies in that year under s. 82.08(2) for bridge and culvert construction and repair.
4. The amount that a county levies in that year to make payments to public libraries under s. 43.12.

66.0602 (3)(e) 3. and 4., General Municipality Law Chapter 66 of Wisconsin State Statutes

Do You Know How Non-Resident Reimbursement Works?

CIRCLE ONE:

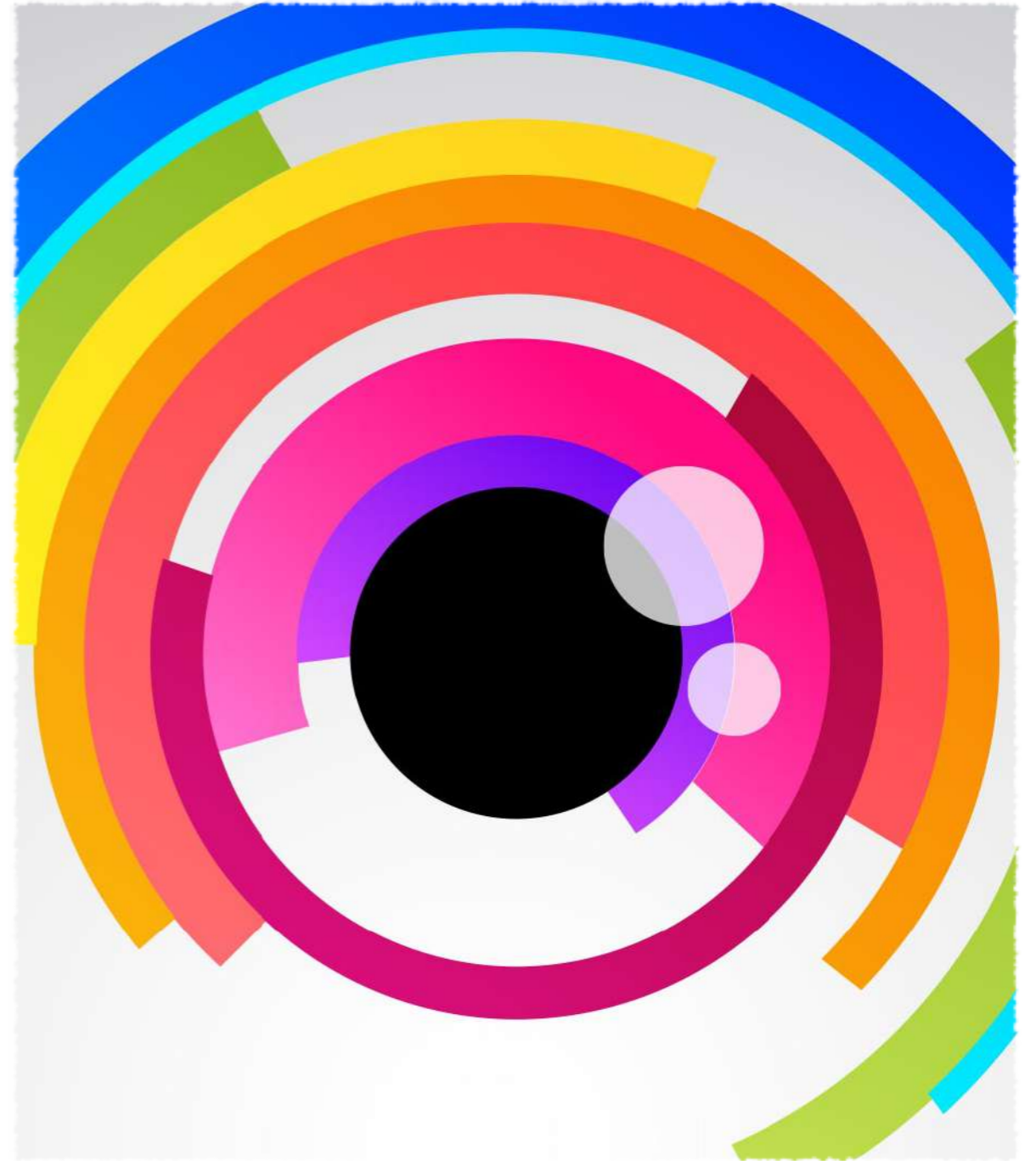
YES

OR

NO

A Feast for their Eyes

- ◆ Start the way you mean to go
- ◆ Mix between numbers and humanity
- ◆ Clear and clean visual data
- ◆ Get feedback



Start the way you mean to go

“The greatest value of a picture is when it forces us to notice what we never expected to see.”

John Turkey

“Visualization gives you questions to answers you didn't know you had.”

Ben Schneidermann

“If the statistics are boring, you've got the wrong numbers”.

Edward Tufte

Mix Between Numbers and Humanity

• 107,000

• Visits to Trempealeau County Libraries in 2016

• 219,000

• Items Circulated at Trempealeau County Libraries in 2016

• 13,931

• Children, teens, and adults who attended Library Programs in 2016

• 1,115

• Educational and Recreational Programs offered in 2016 at Trempealeau County Libraries



Author Visits, Rosemaling
Classes, Photography Show,
and Reading to Harley the
Therapy Cat

Clean and Clear Visual Data

- ◆ Less is more
- ◆ Choose the appropriate chart
- ◆ Tell only one story

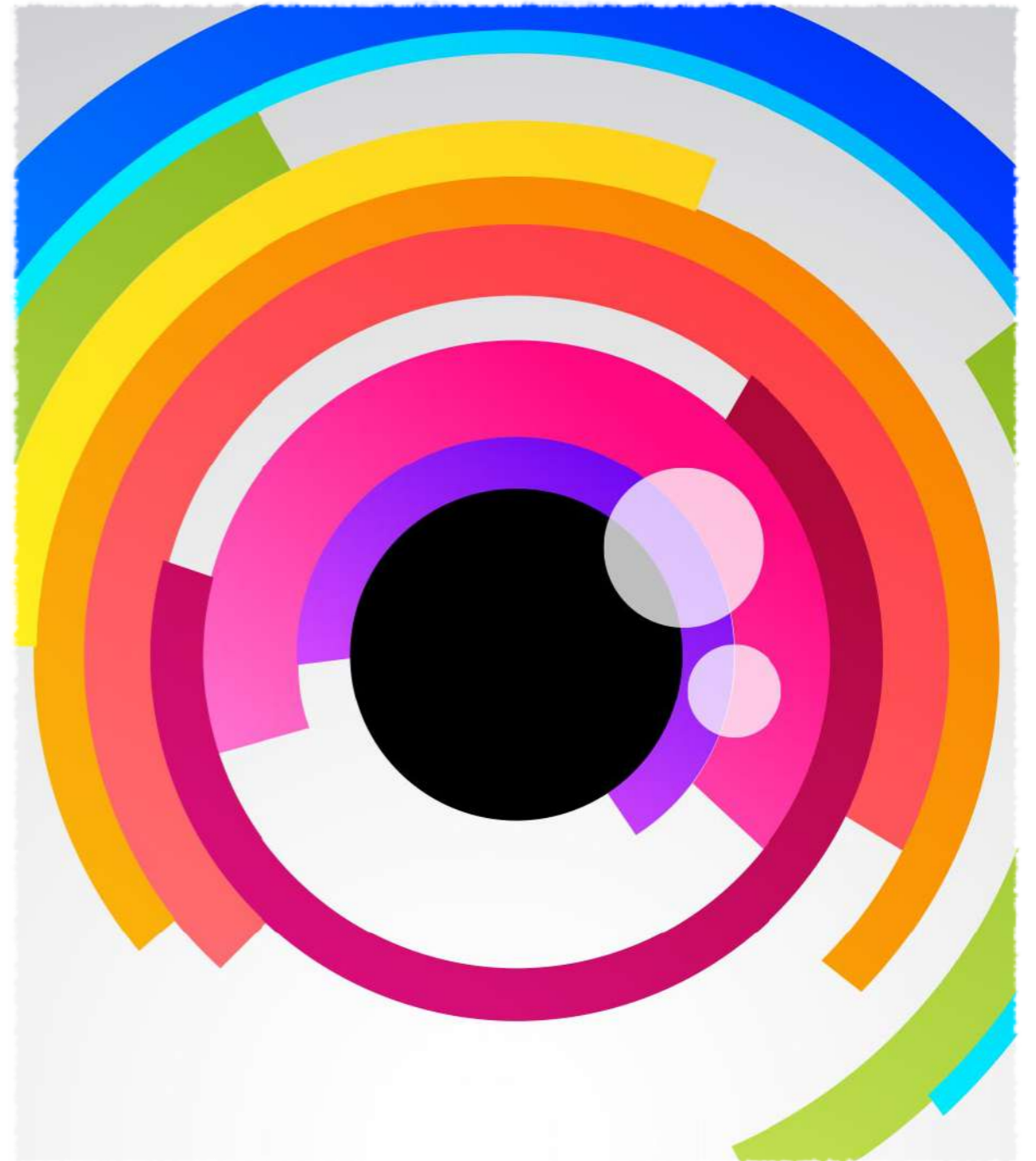


Library Cost Per County Taxpayer compared with Municipal Taxpayer



A Feast for their Eyes

- ◆ Start the way you mean to go
- ◆ Mix between numbers and humanity
- ◆ Clear and clean visual data
- ◆ Get feedback



Get Feedback



**"FEEDBACK IS A FREE
EDUCATION TO
EXCELLENCE. SEEK IT WITH
SINCERITY AND RECEIVE
IT WITH GRACE. "**

**- ANN MARIE
HOUGHTAILING -**



The Presentations



Act 1

◆ Executive Finance Committee

- Charged with the task of providing financial oversight
- Implements any changes to the county budget
- Concerned about the tax levy
- Decision



CAUTION

The Presentations



Act 2

◆ County Budget Hearing

- Rally the troops
- Acknowledge your supporters
- Make your case
 - ★ Mission and Impact
 - ★ Non-Resident Calculations
 - ★ Levy Limit
 - ★ Impact of Inadequate Funding

REPETITION REPETITION REPETITION REPETITION

REPETITION REPETITION REPETITION REPETITION

REPETITION

REPETITION REPETITION REPETITION REPETITION

REPETITION REPETITION REPETITION REPETITION

The Presentations



Act 2

- ◆ County Budget Hearing
 - Rally the troops
 - Public comments
 - Acknowledge your supporters
 - Make your case
 - Take notes
 - Don't go anywhere!



CAUTION

WARNING!



\$1400

\$2500

\$1250

\$3000

\$740

\$650

\$1000
+
ONE SPIN

\$470

\$1300

\$2500

\$750



\$2013
CMU '93

\$500

\$2250

\$500

\$1100

\$1500
+
ONE SPIN



SEXISM



Be Unforgettable

- ◆ Scheduled Attendance
- ◆ Invitations
- ◆ Year in Review
- ◆ Show Appreciation





THANK YOU!

Feel free to contact us at:

AMANDA HEGGE: whitehallpublibrary@wrlsweb.org
JESSICA SCHOONOVER: swmldirector@wrlsweb.org